

# VoglFriestape-Set



## Perfect Borders and Perimeters

*Straight from the Roll*

Perfectly simple frieze solutions

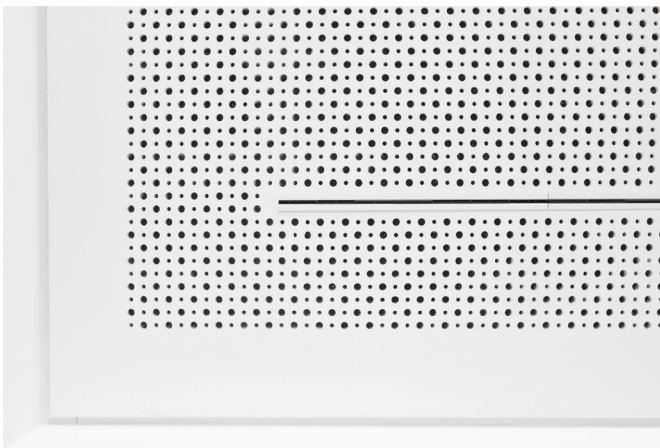
## Ceiling friezes in record time

There are various ways of creating plain borders and perimeters for perforated plasterboard ceilings. They typically require intensive pre-planning and tedious time consuming work on site. Now there is an efficient, clean and safe solution: The VoglFriestape-Set. With this method, non-perforated frieze areas can be produced quickly and economically, saving a great deal of time and hassle. The VoglFriestape-Set includes all accessories needed at the job site for making a frieze of any width. Just a few simple steps can produce a neat perimeter or border.

### Benefits of the VoglFriestape-Set system:

The unique workmanship provides key advantages when creating frieze areas

- Quick, safe and clean workmanship
- No generation of dirt and dust
- Active sound absorption even with the frieze area
- Holes can be re-opened if required
- Filler cannot sink in, nor holes re-emerge



The VoglFriestape-Set includes the required material, tools and a detailed assembly instruction to ensure top quality workmanship and reliable results.

The right tools at the right time in exactly the right place.

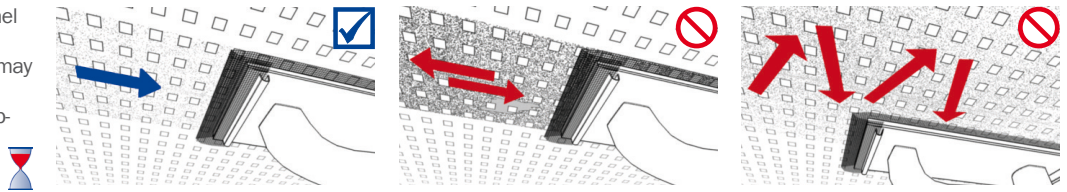


**Note:** On cardboard surfaces of special types of plasterboard (waterproofed, impregnated, with graphite content, with white pre-coating, etc.), test the suitability of the VogIFriestape-Set on site. Owing to the reduced absorption capacity of these cardboard bases, the VogIFriestape-Set may otherwise cause holes to show or bubbles to form.

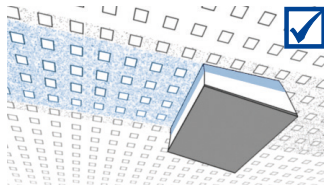
Check cardboard area; sand panel joints and screw holes!

Important! Failure to observe this may cause holes to show!

Unpack tape (remove foil bag) approx. 24 h prior to installation to allow special paper to acclimatise.

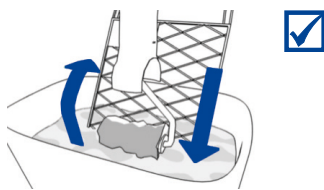


After sanding, wipe joint area with damp sponge to remove any dust or swarf.



Load lambskin roller with liquid glue and roll it downward over paint grid.

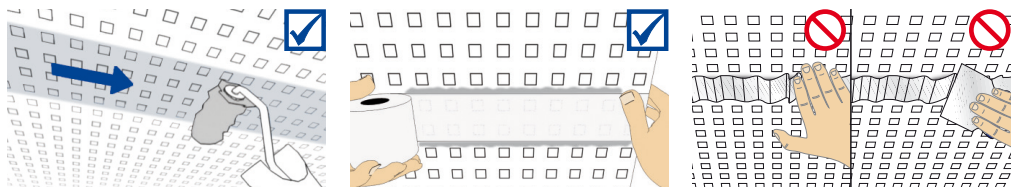
Vogl Liquid Glue = ready mix



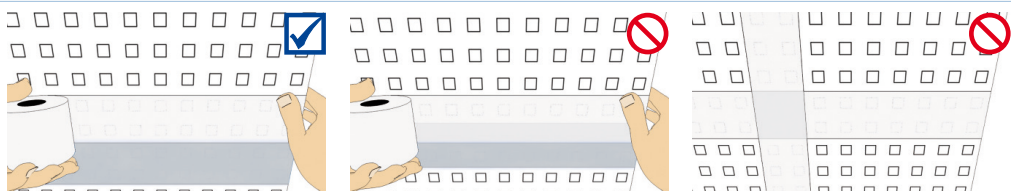
**General site conditions / Manufacturer's instructions:**

- Always store liquid glue in \*\* frost free environment \*\*
- Unpack tape (remove foil bag) approx. 24 h prior to installation to allow special paper to acclimatise.
- Stir liquid glue well before use!
- Working temperature should be at least +10 °C and job site temperature not below +5 °C
- Avoid sudden heating and cooling of rooms
- Relative humidity: 50 - 70 %
- Self-levelling, cement or asphalt screeds must be fully dried – no residual moisture
- Apply tape edge-to-edge only, i.e. no overlapping
- Use liquid glue only undiluted

Roll liquid glue onto frieze area, then apply tape (making sure perforation is completely covered) and press it down with lambskin roller. Once tape has dried, open any half-open holes and then close them with joint compound.

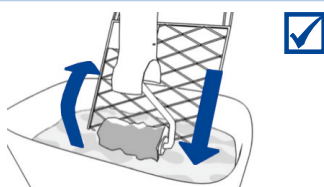


Different widths of tape can be combined without difficulty. However, make sure to lay tapes edge-to-edge. Under no circumstances should tapes be overlapped!



Re-load lambskin roller with liquid glue and roll it downwards over paint grid.

Vogl Liquid Glue = ready mix

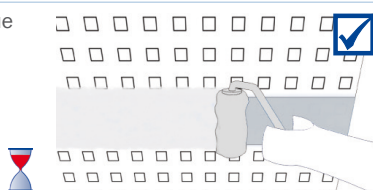


**Surface treatment for painters (in accordance with ATV painting work DIN 18363):**

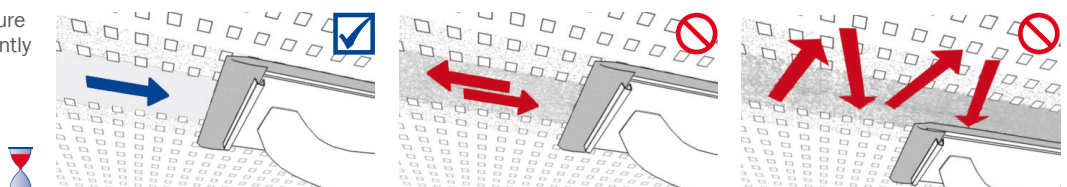
- Only apply coating by roller; spray application is not permitted!
- Prior to application of paint coat, a primer should generally be applied in accordance with manufacturer's specifications
- Manufacturer's recommended drying times for both primer and finishing coat must be strictly observed
- Alkaline coatings are unsuitable for plasterboards
- 3 coats of paint must be applied (1 prime coat + 2 finishing coats), and recommended drying times adhered to
- Always consult system manufacturer's technical data sheets for primers and finishing coats

Apply another coat of liquid glue on frieze area, always working "wet on wet".

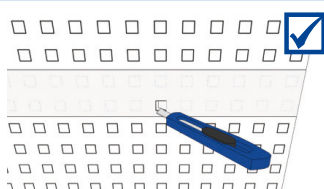
Drying time: Min. 12 h



If necessary, smooth glue texture on tape's visible surface by gently sanding – do not cross sand!



Once fully dry, any holes covered with tape can be re-opened using a sharp blade anytime.



**Scope of delivery, VogIFriestape-Set:**

Vogl Liquid Glue, Vogl Tape, stirring paddle, paint grid, lambskin roller, abrasive mesh, sanding paper, sponge. VogIFriestape-Set is available in various tape widths (20 mm, 50 mm, 75 mm, 100 mm, 150 mm).

Note: VogIFriestape-Set is only recommended for hole sizes up to max. 20 mm.

VoglFriestape-Set		
Item number	Item description	Tape dimensions in linear metres
101748	VoglFriestape-Set 20 mm tape width 20 mm	2 rolls of tape 20 mm = 200 linm
101749	VoglFriestape-Set 50 mm tape width 50 mm	3 rolls of tape 50 mm = 150 linm
101750	VoglFriestape-Set 75 mm tape width 75 mm	2 rolls of tape 75 mm = 100 linm
101751	VoglFriestape-Set 100 mm tape width 100 mm	1 roll of tape 100 mm = 50 linm
101752	VoglFriestape-Set 150 mm tape width 150 mm	1 roll of tape 150 mm = 50 linm



Illustration shows item 101749

**Extra: Creation of frieze area using VoglFriestape**

For extra, create frieze area using VoglFriestape in VoglFriestape-Set, in accordance with manufacturer's instructions.

Frieze width: \_\_\_\_\_ mm

Errors, printing faults and technical changes reserved. Consumption, quantity and design details are based on empirical values. The details contained in this text correspond to the current state of technology. Any relevant valid building technology regulations, standards and guidelines must be observed in addition to our processing instructions. All rights reserved. Reprints as well as electronic reproduction, even extracts, require the express approval of Vogl Deckensysteme GmbH, Industriestrasse 10, DE-91448 Emskirchen, Germany.

**PICTURE CREDITS**

Page 1 top, photo: Donal Murphy - Page 1 bottom left, photo: Vogl Deckensysteme GmbH - Page 2 top right, photo: Kurt Kuball - Page 2 centre left, photo: Uta Kellermann - Page 2 centre right, photo: Walter Henisch - Page 2 bottom, photos: Vogl Deckensysteme GmbH

Status 11/2018

